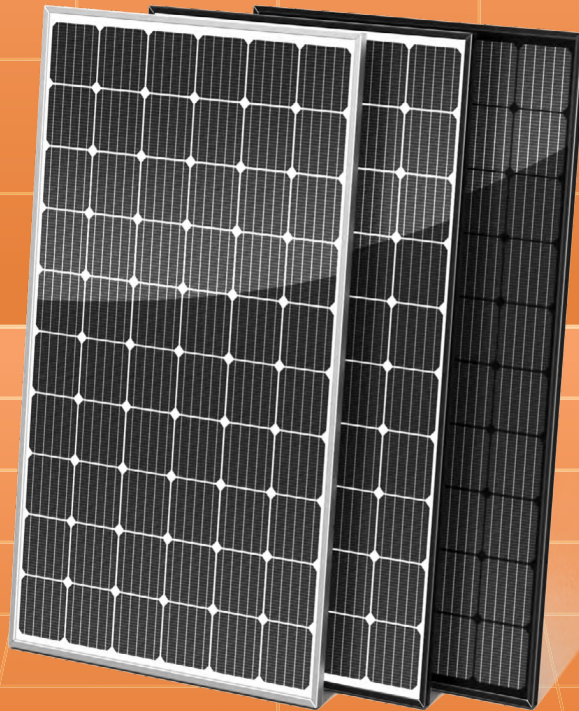


STANDARD SOLAR PANELS

GermanSolar's standard solar panels are high efficiency, convenient, and easy to use



PREMIUMLINE PRO

G1 60 MONO CELL SOLAR PANELS

GSM-305W 310W 315W 320W 325W

GermanSolar is a specialist in customization, introducing colored glass, frames, and back-sheet material and shapes to aesthetically match your ideas with the prospective application. With innovative technology and design, GermanSolar offers high quality modules with enhanced aesthetic appearance for building structures and facades. By providing outstanding customization options, GermanSolar supports your required project needs with colored and shaped panels of your choice, and consults with you in choosing the right size, thickness, shape, and color to complement the design of your application and your building.

FEATURES



Best price-performance ratio



Positive power of up to +5.00 Wp



EL tested and micro cracks inspected



Fully automated production line with German quality engineering and design standards



Better performance in diffused sunlight and high temperature



High ammonia & salt mist resistant certified, and PID-free



Withstands wind loads up to 2400Pa / heavy snow loads up to 5400Pa



12-year limited product warranty



25-year linear performance warranty



Class I Division II
Groups A,B,C&D



STANDARD SOLAR PANELS

ELECTRICAL DATA

| | | | | | |
|--|--------------|-------|-------|-------|-------|
| Nominal Max. Power (P _{max})* (W) | 305 | 310 | 315 | 320 | 325 |
| Open Circuit Voltage (V _{oc}) (V) | 40.08 | 40.32 | 40.50 | 40.74 | 41.05 |
| Short Circuit Current (I _{sc}) (A) | 9.84 | 9.92 | 9.98 | 10.05 | 10.10 |
| Max. Power Voltage (V _{mpp}) (V) | 34.14 | 34.38 | 34.56 | 34.80 | 35.13 |
| Max. Power Current (I _{mp}) (A) | 8.94 | 9.02 | 9.12 | 9.20 | 9.25 |
| Module Efficiency (%) | 18.70 | 19.10 | 19.40 | 19.80 | 21.20 |
| Power Tolerance (%) | ± 3 | | | | |
| Power Temperature Coefficient γ | -0.39 % / °C | | | | |
| Current Temperature Coefficient α | +0.06 % / °C | | | | |
| Voltage Temperature Coefficient β | -0.25 % / °C | | | | |

*STC: Irradiance 1000 W / m², cell temperature 25 °C, AM = 1.5, Tolerance of P_{max} is within + / - 3 %.

NOCT **

| | | | | | |
|--|--------|-------|-------|-------|-------|
| Nominal Max. Power (P _{max})* (W) | 231 | 234 | 238 | 242 | 246 |
| Open Circuit Voltage (V _{oc}) (V) | 38.08 | 38.24 | 38.40 | 38.56 | 38.72 |
| Short Circuit Current (I _{sc}) (A) | 7.63 | 7.71 | 7.78 | 7.85 | 7.93 |
| Max. Power Voltage (V _{mpp}) (V) | 32.14 | 32.35 | 32.56 | 32.77 | 32.98 |
| Max. Power Current (I _{mp}) (A) | 7.17 | 7.24 | 7.31 | 7.38 | 7.45 |
| NMOT (Nominal Module Operating Temperature) (°C) | 41 ± 3 | | | | |

* NOCT: Irradiance at 800 W / m², ambient temperature 20 °C, Wind Speed 1 m / s. AM = 1.5.

MECHANICAL DATA

| | |
|------------------|---|
| Dimensions (mm) | 1665 × 1002 × 35 |
| Weight (kg) | 23 |
| Solar Cells (mm) | Mono 158.75 × 158.75 |
| Front Glass | 3.2 mm glass |
| Backsheet | White or black |
| Frame | Anodised aluminum alloy |
| Junction Box | IP68, 3 diodes |
| Cables | 4 mm ² , 900 mm in length, length can be customized / UV resistant |
| Connectors | MC4 original / MC4 compatible |

PACKAGING

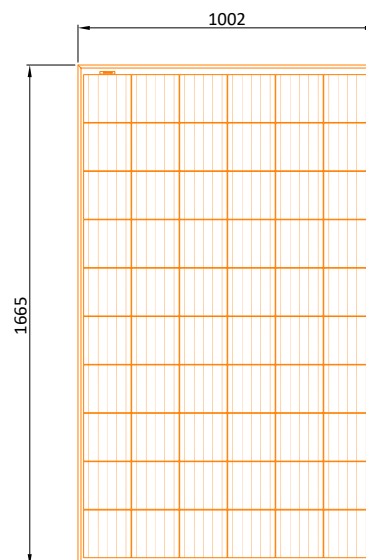
| | |
|---|-----|
| Modules Per Pallet (pcs) | 30 |
| Module quantity per 40' container (pcs) | 312 |
| Module quantity per 40' container (pcs) | 871 |

OPERATING CONDITIONS

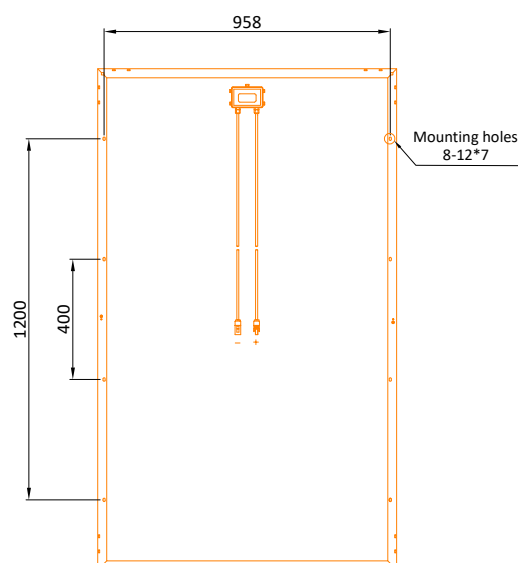
| | |
|---|-------------|
| Max. System Voltage (V) | 1500 |
| Operating Temperature (°C) | -40 ~ +85 |
| Max. Series Fuse Rating (A) | 25 |
| Front Side Maximum Static Loading/ Rear Side Maximum Static Loading (Pa) | 5400 / 2400 |

Design (mm)

Front View



Back View



LINEAR PERFORMANCE WARRANTY

12-Year Product Warranty | 25-Year Performance Warranty

