

High-efficiency photovoltaic module using silicon nitride multicrystalline silicon cells.

Performance

Rated power (P_{max})	50W
Power tolerance	$\pm 10\%$
Nominal voltage	12V
Limited Warranty ¹	25 years

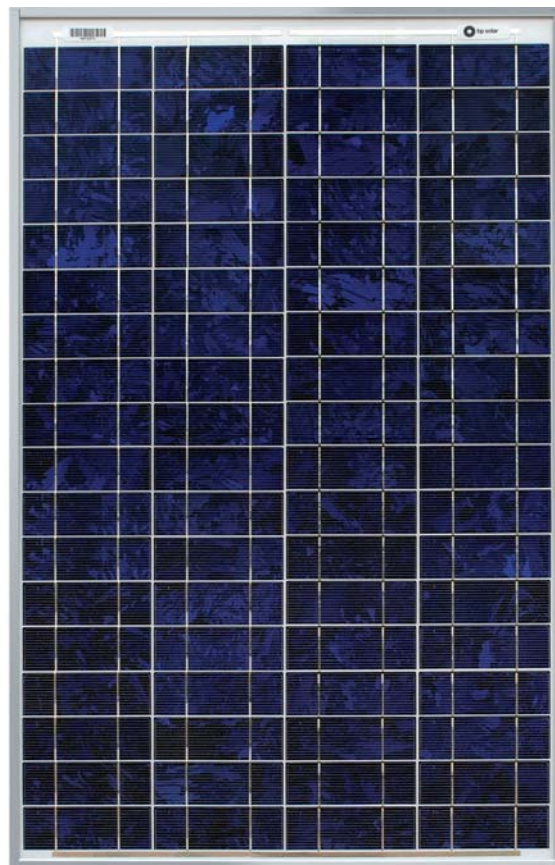
Configuration

J Clear universal frame and standard J-Box

Electrical Characteristics²

BP 350

Maximum power (P_{max}) ³	50W
Voltage at Pmax (V_{mp})	17.5V
Current at Pmax (I_{mp})	2.9A
Warranted minimum P_{max}	45W
Short-circuit current (I_{sc})	3.2A
Open-circuit voltage (V_{oc})	21.8V
Temperature coefficient of I_{sc}	$(0.065 \pm 0.015)\%/^{\circ}C$
Temperature coefficient of V_{oc}	$-(80 \pm 10)mV/^{\circ}C$
Temperature coefficient of power	$-(0.5 \pm 0.05)\%/^{\circ}C$
NOCT (Air 20°C; Sun 0.8kW/m ² ; wind 1m/s)	47 \pm 2°C
Maximum series fuse rating	20A
Maximum system voltage	50V (U.S. NEC & IEC 61215 rating)



Mechanical Characteristics

Dimensions Length: 839mm (33") Width: 537mm (21.1") Depth: 50mm (1.97")

Weight 6.0 kg (13.2 pounds)

Solar Cells 72 cells (42mm x 125mm) in a 4x18 matrix connected in 2 parallel strings of 36 in series

Junction Box J-Version junction box with 4-terminal connection block; IP 65, accepts PG 13.5, M20, ½ inch conduit, or cable fittings accepting 6-12mm diameter cable. Terminals accept 2.5 to 10mm² (8 to 14 AWG) wire.





Diodes One 9A, 45V Schottky by-pass diode included

Construction Front: High-transmission 3mm (1/8th inch) tempered glass; Back: White Polyester; Encapsulant: EVA

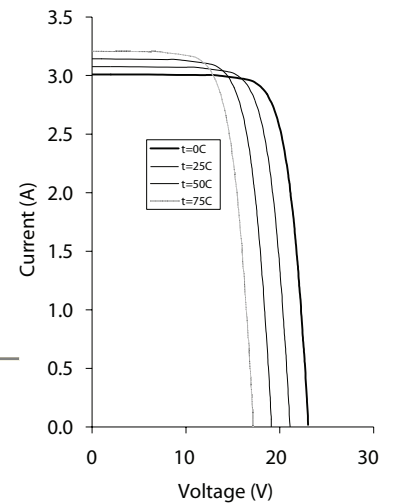
Frame Clear anodized aluminum alloy type 6063T6 Universal frame; Color: silver

1. Module Warranty: 25-year limited warranty of 80% power output; 12-year limited warranty of 90% power output; 5-year limited warranty of materials and workmanship. See your local representative for full terms of these warranties.
2. This data represents the performance of typical BP modules, and are based on measurements made in accordance with ASTM E1036 corrected to SRC (STC.)
3. During the stabilization process that occurs during the first few months of deployment, module power may decrease by approx. 1% from typical P_{max} .

Quality and Safety

	Manufactured in ISO 9001-certified factories; conforms to European Community Directives 89/33/EEC, 73/23/EEC, 93/68/EEC; certified to IEC 61215
	Module power measurements calibrated to World Radiometric Reference through ESTI
	Listed by Underwriter's Laboratories for electrical and fire safety (Class C fire rating)
	Approved by Factory Mutual Research in NEC Class 1, Division 2, Groups C & D hazardous locations.

BP350 I-V Curves

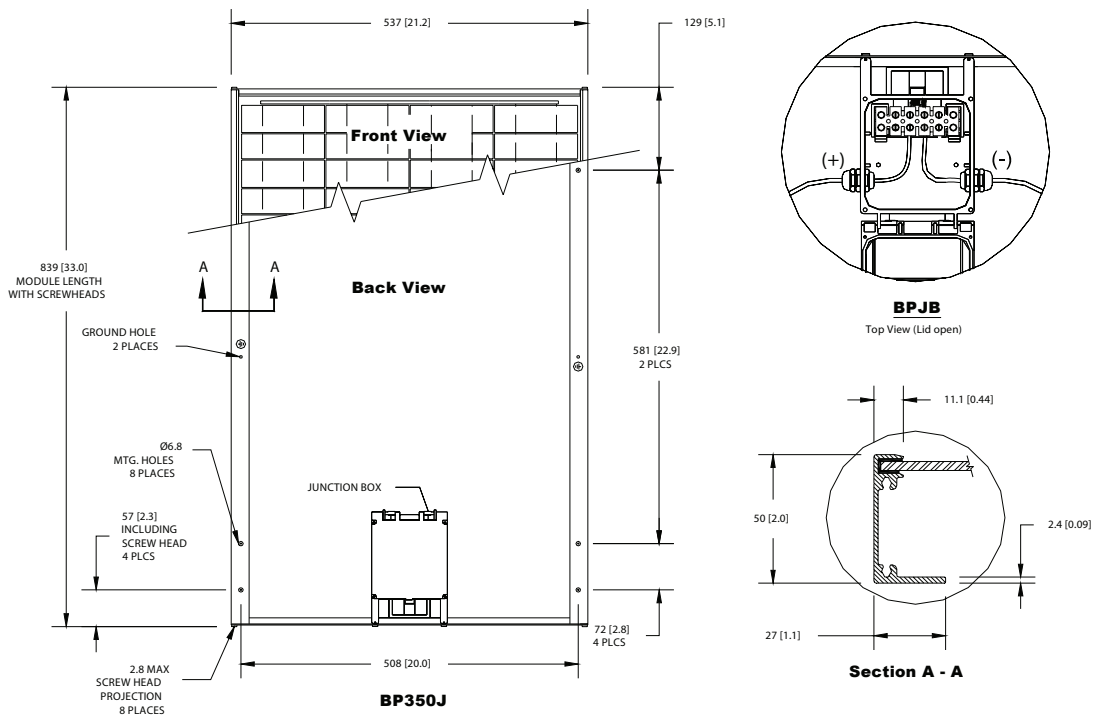


Qualification Test Parameters

Temperature cycling range	-40°C to +85°C (-40°F to 185°F)
Humidity freeze, damp heat	85% RH
Static load front and back (e.g. wind)	50psf (2400 pascals)
Front loading (e.g. snow)	113psf (5400 pascals)
Hailstone impact	25mm (1 inch) at 23 m/s (52mph)

Module Diagram

Dimensions in brackets are in inches. Un-bracketed dimensions are in millimeters. Overall tolerances 3mm (1/8")



Included with each module: self-tapping grounding screw, instruction sheet and warranty document.

Note: This publication summarizes product warranty and specifications, which are subject to change without notice. Additional information may be found on our web site: www.bpsolar.com

© BP Solar 2007

6802.0036 BP350J Rev. B 06/07



For more information on this product and our full-range of solutions, contact Ameresco at **1-855-43-SOLAR**

PS-3606-01-0/11 02 00.0

AMERESCO
Green • Clean • Sustainable