

AMERESCO SOLAR

Green • Clean • Sustainable



Ameresco Solar supplies and distributes a complete line of enclosures to accommodate a wide range of off-grid applications. We have a large selection of enclosures and control cabinets ranging from single battery (for pole and ROHN towers) to custom skid-mounted, multi-battery enclosures. Our enclosure line has the flexibility to meet your solar system storage needs.

BBA-3 Series Features:

UL Listed

- UL 508A, NEMA 3R (Standard)
- NEMA 3R, NEMA 4, NEMA 4X

Available Material and Finish

- Mill finished aluminum (Standard)
- Powder coated aluminum (White)
- Stainless steel (304 or 316)

Enclosure Dimensions

- Overall: (H) 22.625" x (W) 26.5" x (D) 17"
- Opening: (H) 15.25" x (W) 23"
- Inside: (H) 18" x (W) 25" x (D) 15"

Back Panel Dimensions

- (H) 14.5" x (W) 22.5"

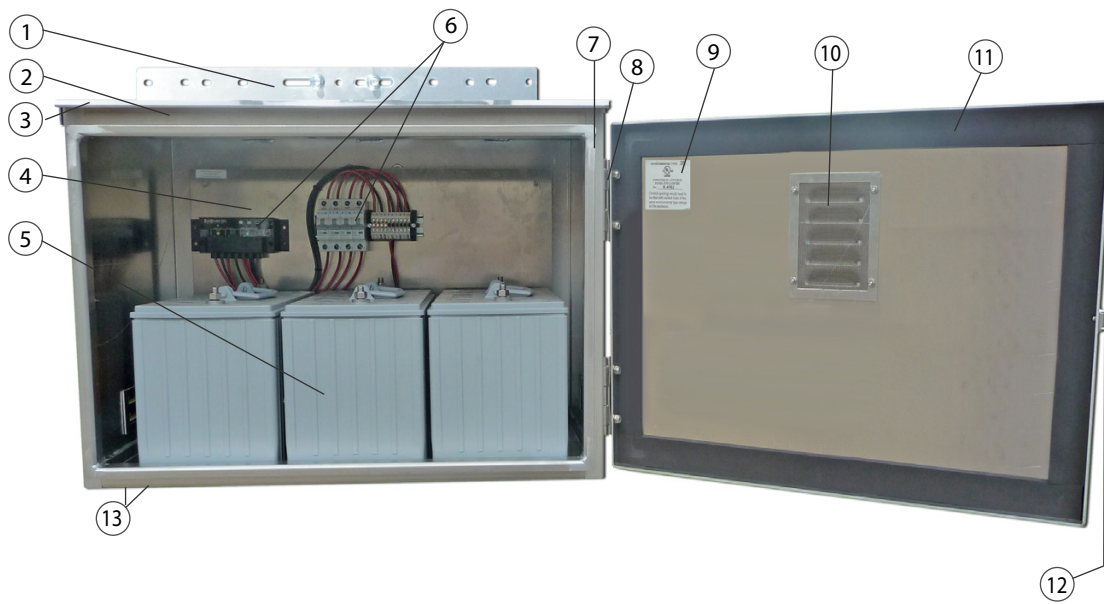
Battery Capacity

- (3) BCI Group 27
- (3) BCI Group 30
- (3) BCI Group 31
- (6) BCI Group U1
- (1) BCI Group 8G4D
- (1) BCI Group 8G8D

Weight

- 37 lbs





- ① Mounting Tab
- ② BBA-3 Cabinet
- ③ Rain Drip Lip
- ④ Back Panel
- ⑤ Battery (Not included)
- ⑥ Electrical Assembly (Not included)
- ⑦ Double Flanged Door Opening
- ⑧ Stainless Steel Hinge
- ⑨ UL Listing/NEMA Rating
- ⑩ Fiberglass "Insect Proof" Screen on all Louvered Openings
- ⑪ Closed Cell Neoprene Gasket
- ⑫ Stainless Lockable Draw Latch
- ⑬ (2) 1/2" NPT Knock-outs (CGB's/Conduit fittings)

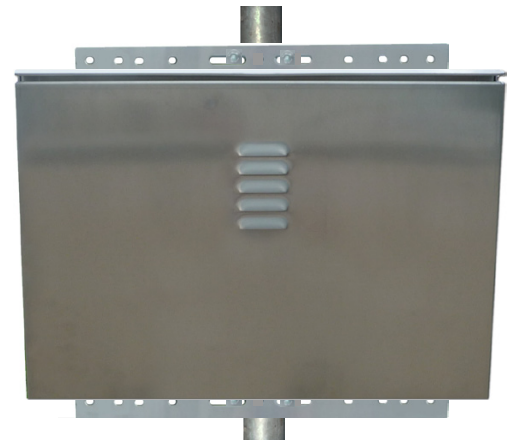
Mounting Structures



Mounts on wall using 4 lag bolts
(Bolts not included)

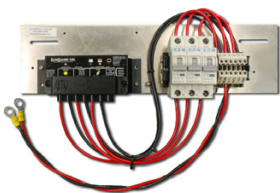


Mounts to Rohn25
tower using 4 u-bolts
(Bolts not included)



Mounts to 2-3" schedule
40 pole using 2 u-bolts
(Bolts not included)

Enclosure Options



Custom designed assembly
sized to meet solar system
requirements



Door fans available in 12V,
24V, and 48V DC/120V AC



Banding available
for unique
mounting structures

Additional Options:

- Breather/drain for NEMA4 - 4X (Required for all battery applications)
- Heat strips (120V, 150W with thermostat)
- Interior insulation (Low E)
- Sun shields (Available for top, sides, and door)
- Key lock (#1 or #2 Pelco)