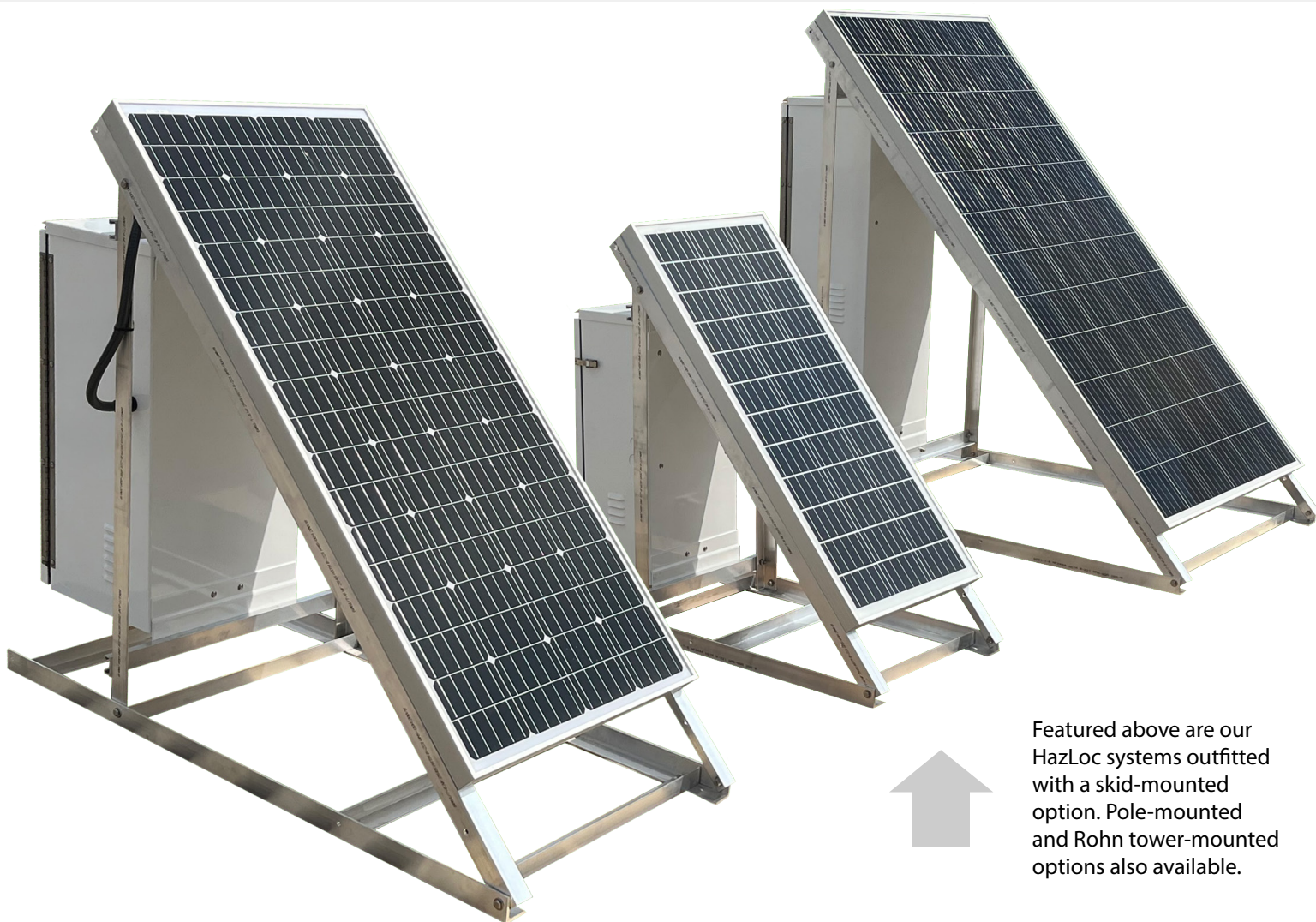


HAZLOC Certified Systems

C1D2 Certified for Hazardous Locations (HazLoc)

AMERESCO  SOLAR

Our Hazardous Locations (HazLoc) C1D2 Certified Systems are available in both 12V and 24V with solar array wattages ranging from 5 - 790W. We currently offer nine standardized HAZLOC certified systems that are available in a small, medium, and large sizes with multiple battery and array configurations.

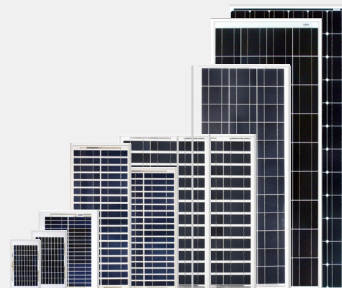


Featured above are our HazLoc systems outfitted with a skid-mounted option. Pole-mounted and Rohn tower-mounted options also available.



From our C1D2 modules to our NEMA rated enclosures, all our HazLoc system components have been selected, designed, and tested to perform seamlessly and reliably under harsh industrial conditions.

Additionally, our HazLoc certified systems can be customized to accommodate various battery type and capacity needs, wattage requirements, and mounting structure demands.



Features Include:

Rain drip lip

NEMA 3R enclosure available in three sizes and finishes to accommodate various battery configurations with capacity from 35-400Ah

Complete electronics assembly includes: pre-wired backplate with charge controller, breakers or fuses, din rail mount, terminal block and all internal wiring

Stainless pad-lockable draw latches

Versatile mounting tabs for 2-4" pole-mount (standard), Rohn tower-mount, or skid-mount

(pole not included)

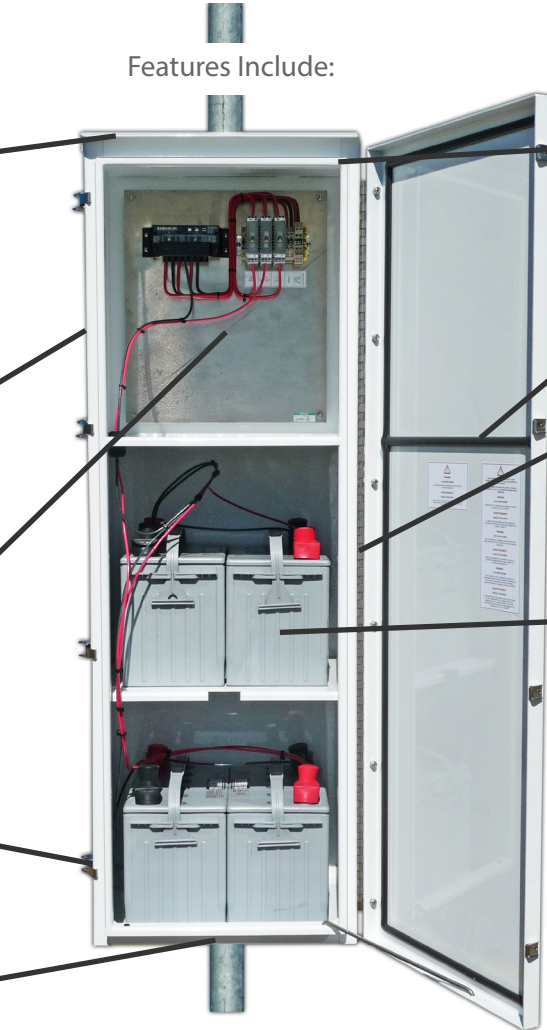
Double flanged door opening

Closed cell neoprene gasket

Full length stainless steel hinge and hardware

Maintenance-free Valve Regulated Lead Acid (VRLA) batteries for deep cycle operation and extended life


Compartment ventilation louvers with "insect-proof" screens



The diagram shows a stainless steel battery enclosure with its door open. Inside, there are two rows of VRLA batteries, a charge controller, and various electrical components. Callout lines point from text boxes to specific features like the rain drip lip, electronics assembly, pad-lockable latches, mounting tabs, door opening, gasket, hinge, batteries, and ventilation louvers.

Conforms to:
ISA STD 12.12.01 &
UL STD 508A

Certified to:
CSA STD C22.2 Nos.
213:2017 Ed.3 &
286:2017 Ed.2



The logo consists of a circular emblem with 'ETL' in the center, 'C' on the left, and 'US' on the right. Below the emblem is the word 'Intertek'.

HazLoc Certified Systems - Standard Configurations

External wiring, mounting kits, and solar modules sold separately. Systems are designed to be used in conjunction with Ameresco Solar C1D2 solar panels. Battery enclosure available in three finishes: white powder-coated aluminum (standard), stainless steel, or mill finish aluminum. Systems accommodate several charge controller brands and footprints as well as optional fuses instead of breakers to alleviate supply chain constraints. Contact us discuss your project or any custom requirements for your HazLoc system.

Part Number	Voltage	PV Array Watts	Typical Battery Capacity	Battery Type	Enclosure Size
HLS1	12 VDC	10-300W	100AH	1-Group 27/31	Medium
HLS2	12 VDC	10-300W	200AH	2-Group 27/31	Medium
HLS3	12 VDC	10-395W	400AH	4-Group 27/31	Large
HLS4	24 VDC	20-790W	100AH	2-Group 27/31	Medium
HLS5	24 VDC	20-790W	200AH	4-Group 27/31	Large
HLS6	12 VDC	10-300W	300AH	3-Group 27/31	Large
HLS7	12 VDC	10-300W	35AH	1-Group U1	Small
HLS8	12 VDC	10-300W	70AH	2-Group U1	Small
HLS9	24 VDC	20-600W	35AH	2-Group U1	Small